

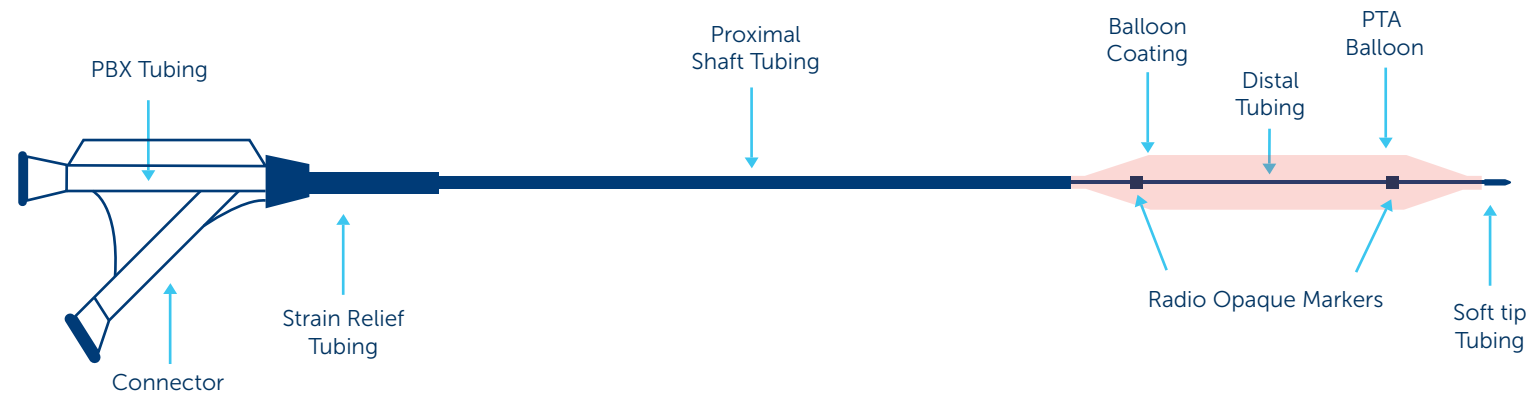
## TECHNICAL SPECIFICATIONS

Drug / Excipient	
Drug	Sirolimus
Drug Dose	1.27 µg/mm <sup>2</sup>
Drug Carrier	Phospholipid
Balloon	
Balloon Compliance	Semi-Compliant
Sheath Compatibility	5F, 6F, 7F

Size Available	
Balloon Diameter (mm)	3.00, 4.00, 5.00, 6.00, 7.00, 8.00, 9.00, 10.00, 12.00
Balloon Length (mm)	20, 40, 60, 80, 100, 120, 150, 200
Catheter Shaft length (cm)	45, 80, 90, 130, 150
Delivery System	
Guide wire Compatibility	0.035" OTW
Guiding Catheter Compatibility	7F to 9F

For Ordering information visit website: [www.conceptmedical.com](http://www.conceptmedical.com)

## OTW DELIVERY SYSTEM



The above drawing is only an illustration of the product.

Disclaimer: The law restricts these devices to sale by or on the order of a physician. Indications, contradictions, warnings can be found in the product labelling / IFU supplied with each device. For restricted use only in countries where product is registered with applicable health authorities.



# Concept Medical

# MagicTouch **AVF**

SIROLIMUS COATED PTA BALLOON CATHETER

# Concept Medical

### Contact Information

Concept Medical 901-903, Trinnity Orion, Beside Jolly Residency, Vesu, Surat-395007, Guj-India.  
 Concept Medical Pte Ltd. 3, Shenton Way, #12-08 Shenton House, Singapore 068805. Concept Medical Inc. 5600 Mariner St Ste 200, Tampa, Florida 33609-3417.  
 Concept Medical B.V. Hogebrinkerweg 33, 3871KM Hoevelaken, The Netherlands.  
 Tel: +31 (0) 850 186 886 | Email : [cs@conceptmedicals.eu](mailto:cs@conceptmedicals.eu)

www.conceptmedical.com | [info@conceptmedical.com](mailto:info@conceptmedical.com)  
 f t @ in /conceptmedicals



CB.BA.MF.BRO.1.0.20-01

ARTERIOVENOUS FISTULA AND GRAFT

## PROMISING REVASCARIZATION THERAPY FOR DYSFUNCTIONAL DIALYSIS FISTULA

- A functioning dialysis access of Arteriovenous Fistula (AVF)/ Arteriovenous Graft (AVG) is critical to the delivery of life saving hemodialysis therapy in patients with End Stage Renal Failure.
- Magic Touch AVF is intended for stenotic lesions of dysfunctional arteriovenous fistula and graft.
- Magic Touch AVF is designed with Nanolute technology that facilitates homogenous drug delivery to the target vessel. It also avoids chronic inflammation by avoiding the use of polymers.



Ultra Low Crossing Profile



Encapsulated drug transport



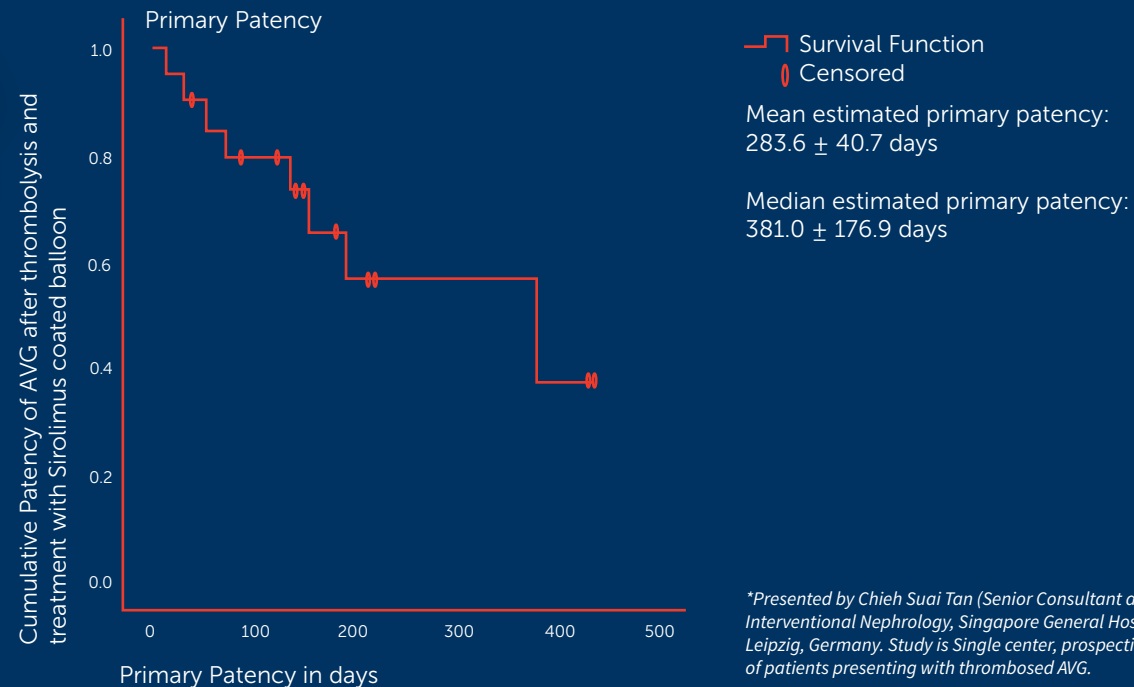
Low Tip Profile



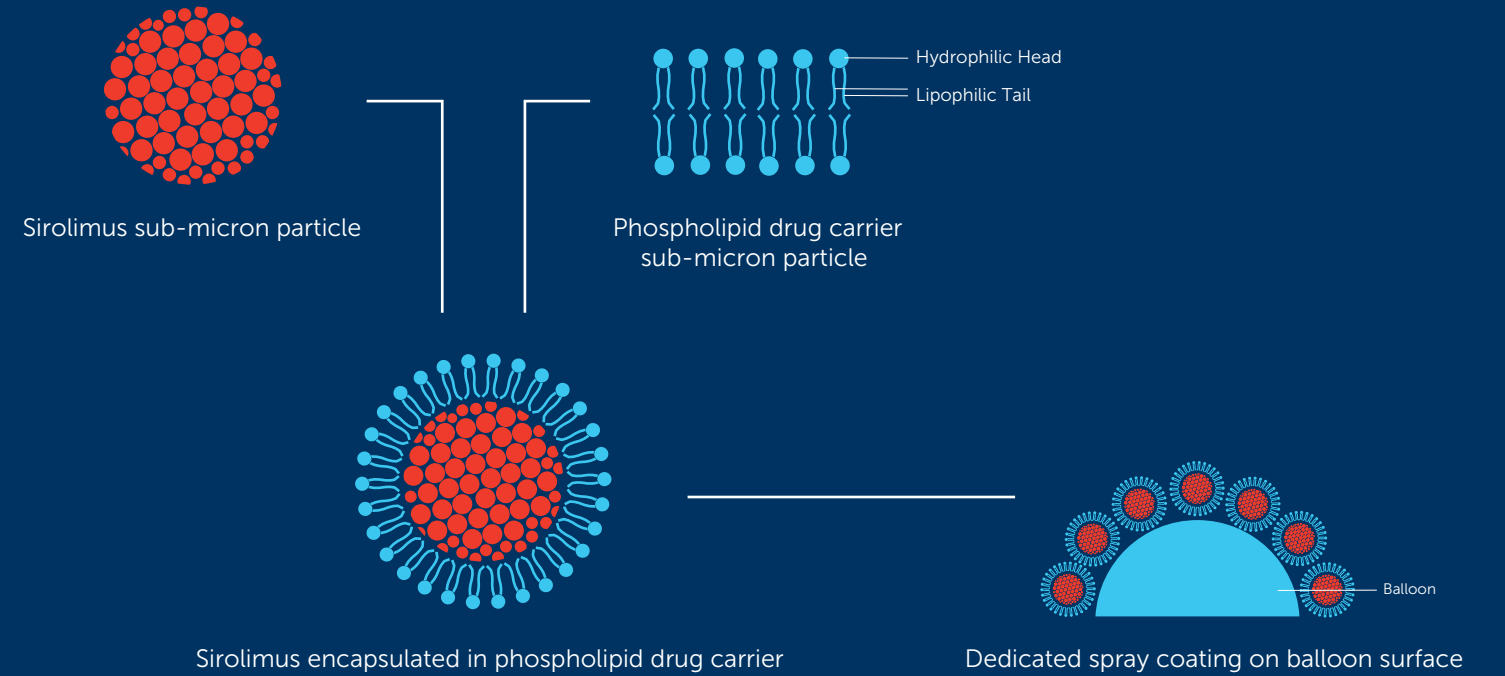
Designed to Perform Best Delivery Mechanism

## CLINICAL EVIDENCE

### Magic Touch AVF in Salvage of Thrombosed Arteriovenous Graft



\*Presented by Chieh Suai Tan (Senior Consultant and Director for Interventional Nephrology, Singapore General Hospital) at LINC 2020, Leipzig, Germany. Study is Single center, prospective pilot study (n=20) of patients presenting with thrombosed AVG.



## ADVANTAGES OF NANOLUTE TECHNOLOGY



Facilitates better adhesion of Sirolimus on the balloon surface



Effective drug transfer to the deepest layer of the vessel



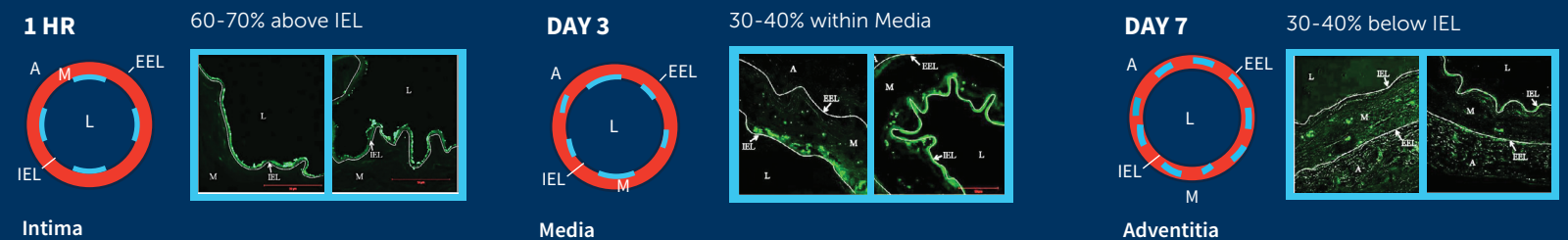
Circumferential coating



Better in-tissue bioavailability of Sirolimus

## SIROLIMUS DISTRIBUTION STUDY

DTF labelled Sirolimus was used to assess the drug distribution following DCB treatment\*



\*EuroIntervention. 2013 May 20;9(1): 148-56