

TECHNICAL SPECIFICATIONS

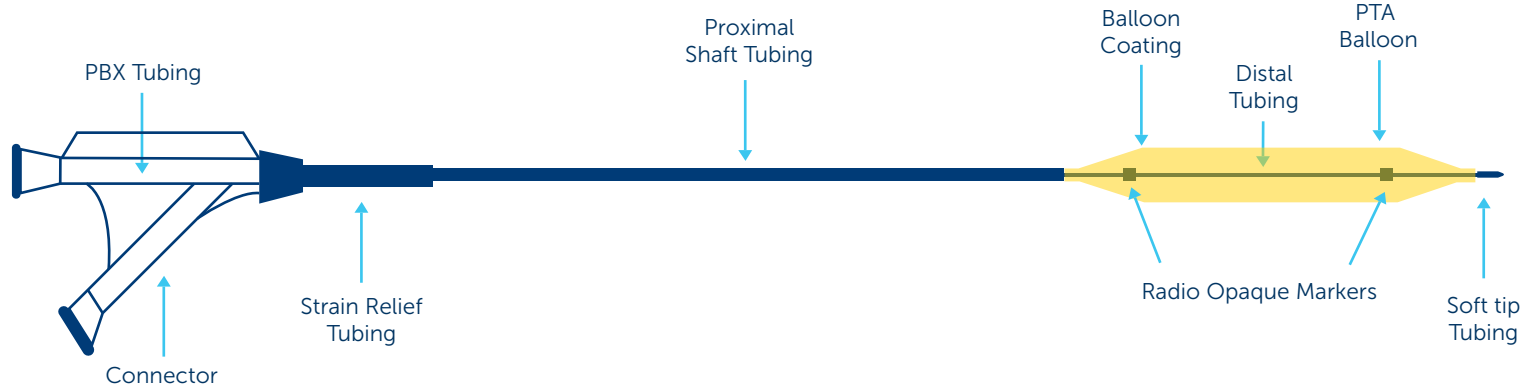
Drug / Excipient	
Drug	Sirolimus
Drug Dose	1.27 µg/mm ²
Drug Carrier	Phospholipid
Balloon	
Delivery System	Over The Wire
Balloon Compliance	Semi-Compliant
Sheath Compatibility	4F to 7F
Guiding Catheter Compatibility	5F to 9F

GUIDEWIRE COMPATIBILITY

Balloon Diameter (mm)	
0.014"	1.50, 2.00, 2.50, 3.00, 3.50, 4.00
0.018"	2.00, 2.50, 3.00, 3.50, 4.00, 5.00, 5.50, 6.00, 7.00
0.035"	3.00, 4.00, 5.00, 6.00, 7.00, 8.00, 9.00, 10.00, 12.00
Balloon Length (mm)	
0.014"	20, 40, 60, 80, 100, 120, 150, 200
0.018"	40, 60, 80, 100, 120, 150, 200
0.035"	20, 40, 60, 80, 100, 120, 150, 200
Catheter Shaft Length (mm)	
0.014"	90, 120, 150
0.018"	90, 120, 150
0.035"	45, 80, 90, 130, 150

For Ordering information visit website: www.conceptmedical.com

OTW DELIVERY SYSTEM



The above drawing is only an illustration of the product.

Disclaimer: The law restricts these devices to sale by or on the order of a physician. Indications, contradictions, warnings can be found in the product labelling / IFU supplied with each device. For restricted use only in countries where product is registered with applicable health authorities.



Concept Medical

MagicTouch PTA

SIROLIMUS COATED PTA BALLOON CATHETER

Concept Medical

Contact Information

Concept Medical 901-903, Trinnity Orion, Beside Jolly Residency, Vesu, Surat-395007, Guj-India.
 Concept Medical Pte Ltd. 3, Shenton Way, #12-08 Shenton House, Singapore 068805. Concept Medical Inc. 5600 Mariner St Ste 200, Tampa, Florida 33609-3417.
 Concept Medical B.V. Hogebrinkerweg 33, 3871KM Hoevelaken, The Netherlands.
 Tel: +31 (0) 850 186 886 | Email : cs@conceptmedicals.eu

www.conceptmedical.com | info@conceptmedical.com
 f t i n /conceptmedicals



CB.BA.MP.BRO.ver.1.0.20-01

PERIPHERAL ARTERY DISEASE

ROLE OF SIROLIMUS IN TREATMENT OF PERIPHERAL ARTERY DISEASE

Peripheral Artery Disease (PAD) is a common circulatory problem in which narrowed arteries (usually superficial, femoral & popliteal) reduce blood flow to your limbs with the most common etiology being atherosclerosis.



Magic Touch PTA is intended for percutaneous transluminal angioplasty of de-novo, stenotic and in-stent restenotic lesions in Superficial femoral (SFA), popliteal, Below The Knee (BTK) and iliac arteries.

Magic Touch PTA designed by propriety NANOLUTE Technology, works as an excellent alternative for revascularization of SFA, popliteal, BTK and iliac arteries by preventing re-narrowing of that arteries.

UNIQUE COATING TECHNOLOGY

Magic Touch PTA developed with Nanolute Technology possesses unique circumferential coating technology that facilitates homogeneous drug distribution to target lesions.



COATING

Low pressure inflation and then coating is performed



REFOLDING

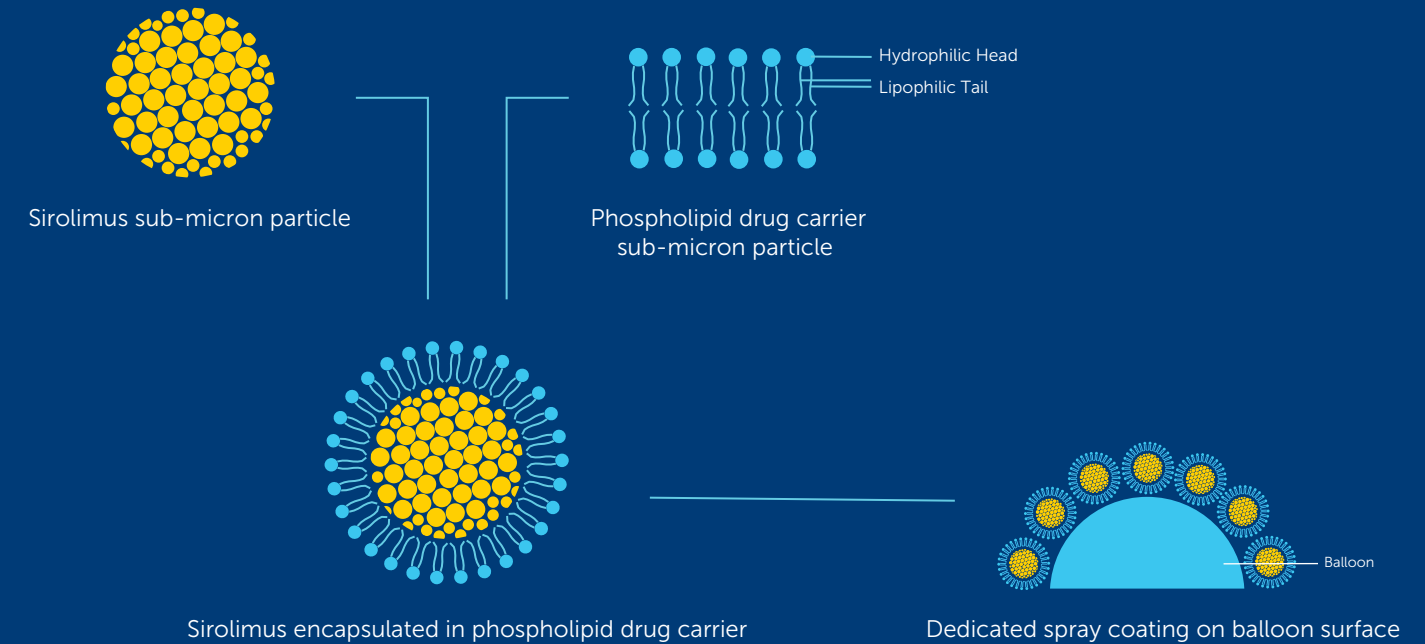


INFLATION

Circumferential coating (100% surface area coated)

WHY SIROLIMUS?

Attribute	Paclitaxel	Sirolimus
Drug Nature	Cytotoxic	Cytostatic
Drug Therapeutic Range	Narrow	Wide
Margin of Safety	100 fold	10,000 Fold
Tissue Absorption	Fast	Slow
Tissue Retention	Long	Short



ADVANTAGES OF NANOLUTE TECHNOLOGY



Facilitates better adhesion of Sirolimus on the balloon surface



Effective drug transfer to the deepest layer of the vessel



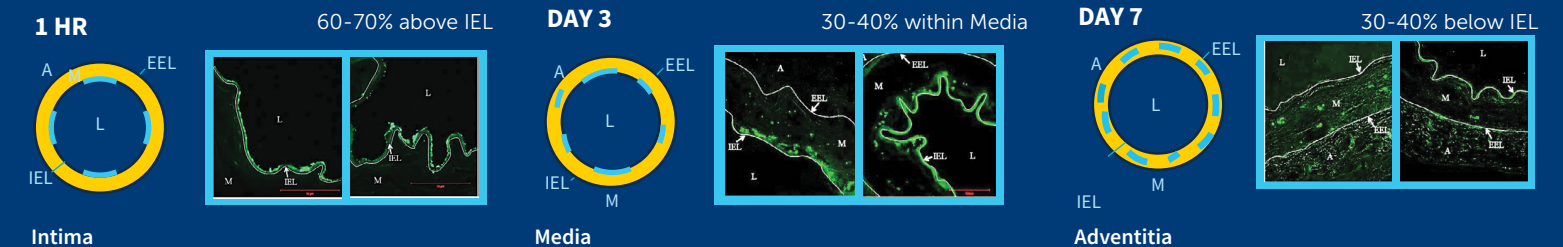
Circumferential coating



Better in-tissue bioavailability of Sirolimus

SIROLIMUS DISTRIBUTION STUDY

DTF labelled Sirolimus was used to assess the drug distribution following DCB treatment*



A: Adventitia; EEL: External Elastic Lamina; IEL: Internal Elastic Lamina; L: Lumen; M: Media *EuroIntervention. 2013 May 20;9(1): 148-56